

## Water-to-water heat pump with stainless steel coil heat exchanger

### Order reference: WI 14ME

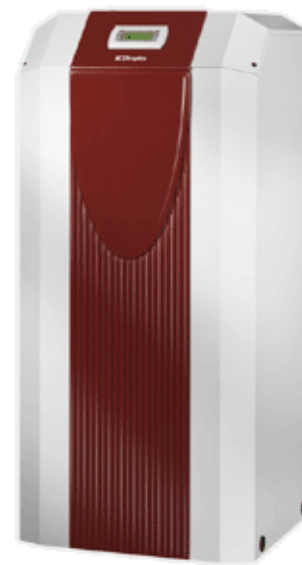
Installation location: Indoors  
 Flow temperature max 58 °C  
 Casing, powder-coated

Heat pump for indoor installation with WPM 2007 plus integrated control and control panel that can also be used as a wired remote control using a wall-mounting kit (special accessory). Variable connection options for ground water and heating system connections on the rear wall of the casing. Sound-optimised through insulated metal casing and double vibration-isolated compressor; integrated corrosion-proof and freeze-proof stainless steel coil heat exchanger; economiser for high COPs. Universal design with optional DHW preparation and the possibility of flexible expansion for:

- Bivalent or bivalent-renewable operating mode
- Distribution systems with unmixed and mixed heating circuits.

Integrated soft starter and flow rate switch for well-water pump; external sensor (standard NTC-2), dirt filter for ground water included in the scope of supply.

The heat pump complies with the valid standards and safety regulations as well as the Technical Specifications for Electrical Installations (TAB) of the electrical utility companies and is VDE certified.



### Technical data WI 14ME

#### Dimplex Water-to-water heat pump with stainless steel coil heat exchanger (Low temperature)

Order reference	WI 14ME	
Set-up / Colour	Indoors / White (similar to RAL 9003)	
Temperature operating limits for heating water / Cold water	58 °C / 7 °C	
Temperature operating limits air	7 °C to 25 °C	
Heat output / COP at W10/W50*	kW/-	13,40 / 3,40
Heat output / COP at W10/W35*	kW/-	13,60 / 5,00
Electrical nominal power consumption at W10/W35	kW	2,72
Sound power level	db(A)	55
Refrigerant R407C	kg	1,60
flow rate (heat source) at ext. pressure differential	m³/h / Pa	3.3 / 19000
Heating water flow rate with an int. pressure differential of	m³/h / mbar	1.30 / 7000
Dimensions (W x D x H)**	mm	650 x 575 x 1445
Weight (incl. packing)	kg	168
Control voltage	V	230
Supply voltage		1/N/PE~230V, 50Hz
Fuse	A	25
Device connections for heating		1 1/4"

\* The specified values have the following meaning, e.g. W10/W35: heat source temperature 10 °C, heat outlet temperature 35 °C.

\*\* Please note that additional space is required for pipe connections, operation and maintenance.

Description	Order ref.	Article number	Sample item	Item	Price
<b>Heat pumps</b>					
Water-to-water heat pump with stainless steel coil heat exchanger	WI 14ME	353350	1		
Elasticated sound insulation underlay strips	SYL 250	352260	1		
<b>Hydraulic accessories</b>					
Floor-mounted buffer tank (200 l)*	PSW 200	339830			
Universal buffer tank (500 l)*	PSW 500	339210			
Immersion heater pipe assembly*	HDLR 450	337450			
3 kW radiator	HCT 300	351210			
Compact manifold with overflow valve	KPV 25	346590	1		
Differential pressureless manifold extension module	EB KPV	348650			
Circulating pump for main heat pump circuit	UP 60	340300			
Circulating pump for main heat pump circuit	UP 80	340310			
Dual differential pressureless manifold*	DDV 32	348450			
Manifold bar for connecting two heating circuits	VTB 25	339870			
Unmixed heating circuit module*	WWM 25	346600			
Mixed heating circuit with temperature sensor*	MMH 25	348640			
Mixer module for bivalent systems	MMB 25	348880			
Fan convector for heating/cooling with integrated thermostat*	HL 11C	351730			
Fan convector for heating/cooling with integrated thermostat*	HL 16C	351740			
Fan convector for heating/cooling with integrated thermostat*	HL 26C	351760			
Fan convector for heating/cooling with integrated thermostat*	HL 36C	351760			
Fan convector for heating/cooling with external thermostat*	HL 11SK	351770			
Fan convector for heating/cooling with external thermostat*	HL 16SK	351780			
Fan convector for heating/cooling with external thermostat*	HL 26SK	351790			
Fan convector for heating/cooling with external thermostat*	HL 36SK	351800			
<b>DHW preparation accessories</b>					
Hot water cylinder (300 l) with temperature sensor*	WWSP 332	346610			
Hot water cylinder (400 l) with temperature sensor*	WWSP 880	337880			
Hot water cylinder (500 l) with temperature sensor*	WWSP 900	339220			
Combination cylinder for heating and DHW preparation	PWS 332	348620	1		
2 kW immersion heater for back-up heating	CTHK 631	336180			
Flange heater for hot water cylinder 230 V/2.5 kW	FLH 25M	349430			
Safety valve combination	SVK 852	326660			
Manifold bar for KPV 25 and HHM 25 connection	VTB 25	339870	1		
Hot water module	WWM 25	346600	1		
Circulating pump for main heat pump circuit	UP 60	340300	1		
Circulating pump for main heat pump circuit	UP 80	340310			
Combi cylinder for heating and domestic hot water preparation with central flow*	PWD 750	349100			
<b>Accessories for passive cooling</b>					
Passive cooling controller*	WPM PK	348190			
Three-way distribution valve for passive cooling*	DWU 25	347760			
Hydraulic passive cooling accessories*	ZWU 32	348950			
<b>Control accessories</b>					
External temperature sensor with casing	FG 3115	336620			
Swimming pool / remote fault indicator relay module	RBG WPM	339700			
Heat pump manager remote control*	FWPM 470	337470			
Remote diagnostics hardware package*	RDS	353790			
Remote diagnostics hardware package (serial)*	LDS	353770			
Remote diagnostics hardware package (USB)*	LDS USB	353780			
Thermostat for heating and domestic hot water	KRRV 003	322070			
<b>Control accessories (cooling)</b>					
Room climate control system for temperature and humidity measurement	RKS WPM	342220			
Heating/cooling on/off room temperature controller*	RTK 501	343080			
Heating/cooling on/off room temperature controller in flat switch mounting frame for flush mounting*	RTK 501 U	350960			
<b>Start-up (no discount available)</b>					
Heat pump (heating only) start-up	IN 01 WP	341750	1		

\* Other specific accessories available / required

**Important information:**

The combination of the components and the quantities indicated represent a non-binding sample system, which needs to be tested and individually adapted as required. Pump dimensioning must be reviewed according to the pressure loss of the system and the minimum heating water flow rate of the heat pump.

## Water-to-water heat pump with stainless steel coil heat exchanger

### Order reference: WI 14TE

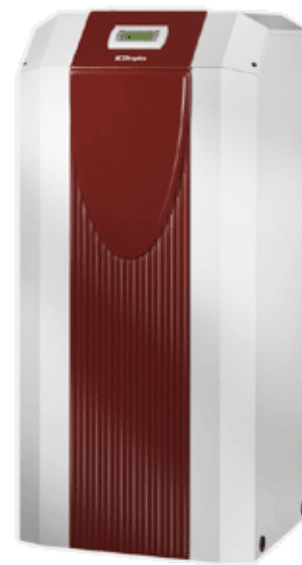
Installation location: Indoors  
 Flow temperature max 58 °C  
 Casing, powder-coated

Heat pump for heating purposes for indoor installation with WPM 2007 plus integrated control and control panel that can also be used as a wired remote control using a wall-mounting kit (special accessory). Variable connection options for ground water and heating system connections on the rear wall of the casing. Sound-optimised through insulated metal casing and double vibration-isolated compressor; integrated corrosion-proof and freeze-proof stainless steel coil heat exchanger; economiser for high COPs. Universal design with optional DHW preparation and the possibility of flexible expansion for:

- Bivalent or bivalent-renewable operating mode
- Distribution systems with unmixed and mixed heating circuits.

Integrated soft starter, flow rate switch and load contactor for well water pump; external sensor (standard NTC-2), dirt filter for ground water included in the scope of supply.

The heat pump complies with the valid standards and safety regulations as well as the Technical Specifications for Electrical Installations (TAB) of the electrical utility companies and is VDE certified.



### Technical data WI 14TE

#### Dimplex Water-to-water heat pump with stainless steel coil heat exchanger (Low temperature)

Order reference	WI 14TE	
Set-up / Colour	Indoors / White (similar to RAL 9003)	
Temperature operating limits for heating water / Cold water	58 °C / 7 °C	
Temperature operating limits air	7 °C to 25 °C	
Heat output / COP at W10/W50*	kW/-	13,40 / 3,60
Heat output / COP at W10/W35*	kW/-	13,60 / 5,20
Electrical nominal power consumption at W10/W35	kW	2,64
Sound power level	db(A)	55
Refrigerant R407C	kg	1,60
flow rate (heat source) at ext. pressure differential	m³/h / Pa	3.3 / 19000
Heating water flow rate with an int. pressure differential of	m³/h / mbar	1.30 / 7000
Dimensions (W x D x H)**	mm	650 x 575 x 1445
Weight (incl. packing)	kg	168
Control voltage	V	230
Supply voltage		3/PE~400V, 50 Hz
Starting current with soft starter	A	26 SA
Fuse	A	16
Device connections for heating		1 1/4"

\* The specified values have the following meaning, e.g. W10/W35: heat source temperature 10 °C, heat outlet temperature 35 °C.

\*\* Please note that additional space is required for pipe connections, operation and maintenance.

Description	Order ref.	Article number	Sample item	Item	Price
<b>Heat pumps</b>					
Water-to-water heat pump with stainless steel coil heat exchanger	WI 14TE	353130	1		
Elasticated sound insulation underlay strips	SYL 250	352260	1		
<b>Hydraulic accessories</b>					
Floor-mounted buffer tank (200 l)*	PSW 200	339830			
Universal buffer tank (500 l)*	PSW 500	339210			
Immersion heater pipe assembly*	HDLR 450	337450			
3 kW radiator	HCT 300	351210			
Compact manifold with overflow valve	KPV 25	346590	1		
Differential pressureless manifold extension module	EB KPV	348650			
Circulating pump for main heat pump circuit	UP 60	340300	1		
Circulating pump for main heat pump circuit	UP 80	340310			
Dual differential pressureless manifold*	DDV 32	348450			
Manifold bar for connecting two heating circuits	VTB 25	339870			
Unmixed heating circuit module*	WWM 25	346600			
Mixed heating circuit with temperature sensor*	MMH 25	348640			
Mixer module for bivalent systems	MMB 25	348880			
Fan convector for heating/cooling with integrated thermostat*	HL 11C	351730			
Fan convector for heating/cooling with integrated thermostat*	HL 16C	351740			
Fan convector for heating/cooling with integrated thermostat*	HL 26C	351760			
Fan convector for heating/cooling with integrated thermostat*	HL 36C	351760			
Fan convector for heating/cooling with external thermostat*	HL 11SK	351770			
Fan convector for heating/cooling with external thermostat*	HL 16SK	351780			
Fan convector for heating/cooling with external thermostat*	HL 26SK	351790			
Fan convector for heating/cooling with external thermostat*	HL 36SK	351800			
<b>DHW preparation accessories</b>					
Hot water cylinder (300 l) with temperature sensor*	WWSP 332	346610			
Hot water cylinder (400 l) with temperature sensor*	WWSP 880	337880			
Design hot water cylinder (400 l)*	WWSP 442E	353370			
Hot water cylinder (500 l) with temperature sensor*	WWSP 900	339220			
Combination cylinder for heating and DHW preparation	PWS 332	348620	1		
2 kW immersion heater for back-up heating	CTHK 631	336180			
2.9 kW immersion heater for back-up heating	CTHK 632	335910			
4.5 kW immersion heater for back-up heating	CTHK 633	322140			
6 kW immersion heater for back-up heating	CTHK 634	322150			
7.5 kW immersion heater for back-up heating	CTHK 635	322160			
6 kW flange heater for hot water cylinder	FLH 60	338060			
2/2.7/4 kW flange heater for hot water cylinder	FLHU 70	338070	1		
Flange heater for hot water cylinder 230 V/2.5 kW	FLH 25M	349430			
Safety valve combination	SVK 852	326660			
Manifold bar for KPV 25 and HHM 25 connection	VTB 25	339870	1		
Hot water module	WWM 25	346600	1		
Circulating pump for main heat pump circuit	UP 60	340300	1		
Circulating pump for main heat pump circuit	UP 80	340310			
Combi cylinder for heating and domestic hot water preparation with central flow*	PWD 750	349100			
<b>Accessories for passive cooling</b>					
Passive cooling controller*	WPM PK	348190			
Three-way distribution valve for passive cooling*	DWU 25	347760			
Hydraulic passive cooling accessories*	ZWU 32	348950			
<b>Control accessories</b>					
External temperature sensor with casing	FG 3115	336620			
Swimming pool / remote fault indicator relay module	RBG WPM	339700			
Heat pump manager remote control*	FWPM 470	337470			
Remote diagnostics hardware package*	RDS	353790			
Remote diagnostics hardware package (serial)*	LDS	353770			
Remote diagnostics hardware package (USB)*	LDS USB	353780			
Thermostat for heating and domestic hot water	KRRV 003	322070			
<b>Control accessories (cooling)</b>					
Room climate control system for temperature and humidity	RKS WPM	342220			

Description	Order ref.	Article number	Sample item	Item	Price
measurement					
Heating/cooling on/off room temperature controller*	RTK 501	343080			
Heating/cooling on-off room temperature controller in flat switch mounting frame for flush mounting*	RTK 501 U	350960			
Extended dew point monitoring*	TPW WPM	350970			
<b>Start-up (no discount available)</b>					
Heat pump (heating only) start-up	IN 01 WP	341750	1		

\* Other specific accessories available / required

**Important information:**

The combination of the components and the quantities indicated represent a non-binding sample system, which needs to be tested and individually adapted as required. Pump dimensioning must be reviewed according to the pressure loss of the system and the minimum heating water flow rate of the heat pump.

## Water-to-water heat pump with stainless steel coil heat exchanger

### Order reference: WI 18TE

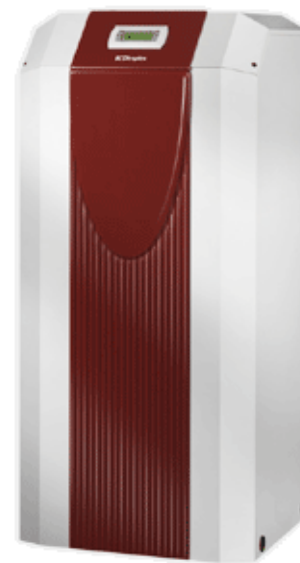
Installation location: Indoors  
 Flow temperature max 58 °C  
 Casing, powder-coated

Heat pump for heating purposes for indoor installation with WPM 2007 plus integrated control and control panel that can also be used as a wired remote control using a wall-mounting kit (special accessory). Variable connection options for ground water and heating system connections on the rear wall of the casing. Sound-optimised through insulated metal casing and double vibration-isolated compressor; integrated corrosion-proof and freeze-proof stainless steel coil heat exchanger; economiser for high COPs. Universal design with optional DHW preparation and the possibility of flexible expansion for:

- Bivalent or bivalent-renewable operating mode
- Distribution systems with unmixed and mixed heating circuits.

Integrated soft starter, flow rate switch and load contactor for well water pump; external sensor (standard NTC-2), dirt filter for ground water included in the scope of supply.

The heat pump complies with the valid standards and safety regulations as well as the Technical Specifications for Electrical Installations (TAB) of the electrical utility companies and is VDE certified.



### Technical data WI 18TE

#### Dimplex Water-to-water heat pump with stainless steel coil heat exchanger (Low temperature)

Order reference	WI 18TE	
Set-up / Colour	Indoors / White (similar to RAL 9003)	
Temperature operating limits for heating water / Cold water	58 °C / 7 °C	
Temperature operating limits air	7 °C to 25 °C	
Heat output / COP at W10/W50*	kW/-	16,30 / 3,70
Heat output / COP at W10/W35*	kW/-	17,10 / 5,30
Electrical nominal power consumption at W10/W35	kW	3,20
Sound power level	db(A)	55
Refrigerant R407C	kg	3,50
flow rate (heat source) at ext. pressure differential	m³/h / Pa	4.0 / 12000
Heating water flow rate with an int. pressure differential of	m³/h / mbar	1.60 / 2600
Dimensions (W x D x H)**	mm	650 x 575 x 1445
Weight (incl. packing)	kg	187
Control voltage	V	230
Supply voltage		3/PE~400V, 50 Hz
Starting current with soft starter	A	28 SA
Fuse	A	16
Device connections for heating		1 1/4"

\* The specified values have the following meaning, e.g. W10/W35: heat source temperature 10 °C, heat outlet temperature 35 °C.

\*\* Please note that additional space is required for pipe connections, operation and maintenance.



Description	Order ref.	Article number	Sample item	Item	Price
<b>Heat pumps</b>					
Water-to-water heat pump with stainless steel coil heat exchanger	WI 18TE	353140	1		
Elasticated sound insulation underlay strips	SYL 250	352260	1		
<b>Hydraulic accessories</b>					
Floor-mounted buffer tank (200 l)	PSW 200	339830	1		
2 kW immersion heater for back-up heating	CTHK 631	336180			
2.9 kW immersion heater for back-up heating	CTHK 632	335910			
4.5 kW immersion heater for back-up heating	CTHK 633	322140			
6 kW immersion heater for back-up heating	CTHK 634	322150			
Universal buffer tank (500 l)*	PSW 500	339210			
Immersion heater pipe assembly*	HDLR 450	337450			
Compact manifold with overflow valve	KPV 25	346590	1		
Differential pressureless manifold extension module	EB KPV	348650	1		
Circulating pump for main heat pump circuit	UP 60	340300	1		
Circulating pump for main heat pump circuit	UP 80	340310			
Dual differential pressureless manifold*	DDV 32	348450			
Manifold bar for connecting two heating circuits	VTB 25	339870			
Unmixed heating circuit module	WWM 25	346600	1		
Circulating pump depending on heating system pressure drop	bauseits				
Mixed heating circuit with temperature sensor*	MMH 25	348640			
Mixer module for bivalent systems	MMB 25	348880			
Fan convector for heating/cooling with integrated thermostat*	HL 11C	351730			
Fan convector for heating/cooling with integrated thermostat*	HL 16C	351740			
Fan convector for heating/cooling with integrated thermostat*	HL 26C	351760			
Fan convector for heating/cooling with integrated thermostat*	HL 36C	351760			
Fan convector for heating/cooling with external thermostat*	HL 11SK	351770			
Fan convector for heating/cooling with external thermostat*	HL 16SK	351780			
Fan convector for heating/cooling with external thermostat*	HL 26SK	351790			
Fan convector for heating/cooling with external thermostat*	HL 36SK	351800			
<b>DHW preparation accessories</b>					
Hot water cylinder (500 l) with temperature sensor	WWSP 900	339220	1		
6 kW flange heater for hot water cylinder	FLH 60	338060			
2/2.7/4 kW flange heater for hot water cylinder	FLHU 70	338070	1		
Flange heater for hot water cylinder 230 V/2.5 kW	FLH 25M	349430			
Safety valve combination	SVK 852	326660			
Solar station for hot water	SST 25	348430			
Manifold bar for KPV 25 and HHM 25 connection	VTB 25	339870	1		
Hot water module	WWM 25	346600	1		
Circulating pump for main heat pump circuit	UP 80	340310	1		
Combi cylinder for heating and domestic hot water preparation with central flow*	PWD 750	349100			
<b>Accessories for passive cooling</b>					
Passive cooling controller*	WPM PK	348190			
Three-way distribution valve for passive cooling*	DWU 40	347770			
Hydraulic passive cooling accessories*	ZWU 32	348950			
<b>Control accessories</b>					
Swimming pool / remote fault indicator relay module	RBG WPM	339700			
Heat pump manager remote control*	FWPM 470	337470			
Remote diagnostics hardware package*	RDS	353790			
Remote diagnostics hardware package (serial)*	LDS	353770			
Remote diagnostics hardware package (USB)*	LDS USB	353780			
Thermostat for heating and domestic hot water	KRRV 003	322070			
<b>Control accessories (cooling)</b>					
Room climate control system for temperature and humidity measurement	RKS WPM	342220			
Heating/cooling on/off room temperature controller*	RTK 501	343080			
Heating/cooling on-off room temperature controller in flat switch mounting frame for flush mounting*	RTK 501 U	350960			
Extended dew point monitoring*	TPW WPM	350970			
<b>Start-up (no discount available)</b>					



Description	Order ref.	Article number	Sample item	Item	Price
Heat pump (heating only) start-up	IN 01 WP	341750	1		

\* Other specific accessories available / required

**Important information:**

The combination of the components and the quantities indicated represent a non-binding sample system, which needs to be tested and individually adapted as required. Pump dimensioning must be reviewed according to the pressure loss of the system and the minimum heating water flow rate of the heat pump.

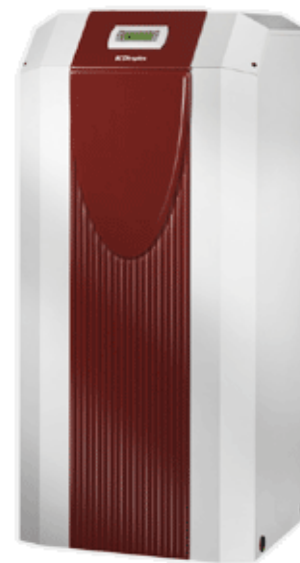
## Water-to-water heat pump with stainless steel coil heat exchanger

### Order reference: WI 22TE

Installation location: Indoors  
 Flow temperature max 58 °C  
 Casing, powder-coated

Heat pump for heating purposes for indoor installation with WPM 2007 plus integrated control and control panel that can also be used as a wired remote control using a wall-mounting kit (special accessory). Variable connection options for ground water and heating system connections on the rear wall of the casing. Sound-optimised through insulated metal casing and double vibration-isolated compressor; integrated corrosion-proof and freeze-proof stainless steel coil heat exchanger; economiser for high COPs.

The heat pump complies with the valid standards and safety regulations as well as the Technical Specifications for Electrical Installations (TAB) of the electrical utility companies and is VDE certified.



### Technical data WI 22TE

#### Dimplex Water-to-water heat pump with stainless steel coil heat exchanger (Low temperature)

Order reference	WI 22TE	
Set-up / Colour	Indoors / White (similar to RAL 9003)	
Temperature operating limits for heating water / Cold water	58 °C / 7 °C	
Temperature operating limits air	7 °C to 25 °C	
Heat output / COP at W10/W50*	kW/-	20,80 / 3,80
Heat output / COP at W10/W35*	kW/-	21,50 / 5,50
Electrical nominal power consumption at W10/W35	kW	3,93
Sound power level	db(A)	58
Refrigerant R407C	kg	3,20
flow rate (heat source) at ext. pressure differential	m³/h / Pa	5.0 / 20000
Heating water flow rate with an int. pressure differential of	m³/h / mbar	2.00 / 8000
Dimensions (W x D x H)**	mm	650 x 575 x 1445
Weight (incl. packing)	kg	189
Control voltage	V	230
Supply voltage		3/PE~400V, 50 Hz
Starting current with soft starter	A	27 SA
Fuse	A	20
Device connections for heating		1 1/4"

\* The specified values have the following meaning, e.g. W10/W35: heat source temperature 10 °C, heat outlet temperature 35 °C.

\*\* Please note that additional space is required for pipe connections, operation and maintenance.

Description	Order ref.	Article number	Sample item	Item	Price
<b>Heat pumps</b>					
Water-to-water heat pump with stainless steel coil heat exchanger	WI 22TE	353150	1		
Elasticated sound insulation underlay strips	SYL 250	352260	1		
<b>Hydraulic accessories</b>					
Floor-mounted buffer tank (200 l)	PSW 200	339830	1		
2 kW immersion heater for back-up heating	CTHK 631	336180			
2.9 kW immersion heater for back-up heating	CTHK 632	335910			
4.5 kW immersion heater for back-up heating	CTHK 633	322140			
6 kW immersion heater for back-up heating	CTHK 634	322150			
Universal buffer tank (500 l)*	PSW 500	339210			
Immersion heater pipe assembly*	HDLR 450	337450			
Compact manifold with overflow valve	KPV 25	346590	1		
Differential pressureless manifold extension module	EB KPV	348650	1		
Circulating pump for main heat pump circuit	UP 60	340300	1		
Circulating pump for main heat pump circuit	UP 80	340310			
Dual differential pressureless manifold*	DDV 32	348450			
Manifold bar for connecting two heating circuits	VTB 25	339870			
Unmixed heating circuit module	WWM 25	346600	1		
Circulating pump depending on heating system pressure drop	bauseits				
Mixed heating circuit with temperature sensor*	MMH 25	348640			
Mixer module for bivalent systems	MMB 25	348880			
Fan convector for heating/cooling with integrated thermostat*	HL 11C	351730			
Fan convector for heating/cooling with integrated thermostat*	HL 16C	351740			
Fan convector for heating/cooling with integrated thermostat*	HL 26C	351760			
Fan convector for heating/cooling with integrated thermostat*	HL 36C	351760			
Fan convector for heating/cooling with external thermostat*	HL 11SK	351770			
Fan convector for heating/cooling with external thermostat*	HL 16SK	351780			
Fan convector for heating/cooling with external thermostat*	HL 26SK	351790			
Fan convector for heating/cooling with external thermostat*	HL 36SK	351800			
<b>DHW preparation accessories</b>					
Hot water cylinder (500 l) with temperature sensor	WWSP 900	339220	1		
6 kW flange heater for hot water cylinder	FLH 60	338060			
2/2.7/4 kW flange heater for hot water cylinder	FLHU 70	338070	1		
Flange heater for hot water cylinder 230 V/2.5 kW	FLH 25M	349430			
Safety valve combination	SVK 852	326660			
Solar station for hot water	SST 25	348430			
Manifold bar for KPV 25 and HHM 25 connection	VTB 25	339870	1		
Hot water module	WWM 25	346600	1		
Circulating pump for main heat pump circuit	UP 80	340310	1		
Combi cylinder for heating and domestic hot water preparation with central flow*	PWD 750	349100			
<b>Accessories for passive cooling</b>					
Passive cooling controller*	WPM PK	348190			
Three-way distribution valve for passive cooling*	DWU 40	347770			
Hydraulic passive cooling accessories*	ZWU 32	348950			
<b>Control accessories</b>					
Swimming pool / remote fault indicator relay module	RBG WPM	339700			
Heat pump manager remote control*	FWPM 470	337470			
Remote diagnostics hardware package*	RDS	353790			
Remote diagnostics hardware package (serial)*	LDS	353770			
Remote diagnostics hardware package (USB)*	LDS USB	353780			
Thermostat for heating and domestic hot water	KRRV 003	322070			
<b>Control accessories (cooling)</b>					
Room climate control system for temperature and humidity measurement	RKS WPM	342220			
Heating/cooling on/off room temperature controller*	RTK 501	343080			
Heating/cooling on-off room temperature controller in flat switch mounting frame for flush mounting*	RTK 501 U	350960			
Extended dew point monitoring*	TPW WPM	350970			
<b>Start-up (no discount available)</b>					

Description	Order ref.	Article number	Sample item	Item	Price
Heat pump (heating only) start-up	IN 01 WP	341750	1		

\* Other specific accessories available / required

**Important information:**

The combination of the components and the quantities indicated represent a non-binding sample system, which needs to be tested and individually adapted as required. Pump dimensioning must be reviewed according to the pressure loss of the system and the minimum heating water flow rate of the heat pump.

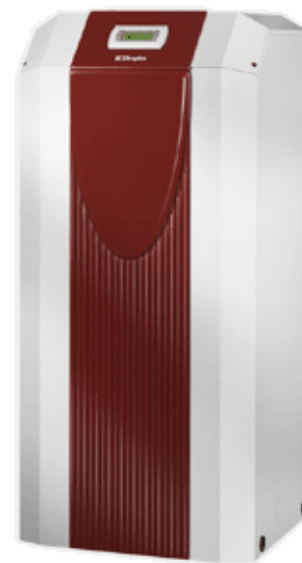
## Water-to-water heat pump with stainless steel coil heat exchanger

### Order reference: WI 27TE

Installation location: Indoors  
 Flow temperature max 58 °C  
 Casing, powder-coated

Heat pump for heating purposes for indoor installation with WPM 2007 plus integrated control and control panel that can also be used as a wired remote control using a wall-mounting kit (special accessory). Variable connection options for ground water and heating system connections on the rear wall of the casing. Sound-optimised through insulated metal casing and double vibration-isolated compressor; integrated corrosion-proof and freeze-proof stainless steel coil heat exchanger; economiser for high COPs.

The heat pump complies with the valid standards and safety regulations as well as the Technical Specifications for Electrical Installations (TAB) of the electrical utility companies and is VDE certified.



### Technical data WI 27TE

#### Dimplex Water-to-water heat pump with stainless steel coil heat exchanger (Low temperature)

Order reference	WI 27TE	
Set-up / Colour	Indoors / White (similar to RAL 9003)	
Temperature operating limits for heating water / Cold water	58 °C / 7 °C	
Temperature operating limits air	7 °C to 25 °C	
Heat output / COP at W10/W50*	kW/-	26,40 / 3,80
Heat output / COP at W10/W35*	kW/-	26,40 / 5,10
Electrical nominal power consumption at W10/W35	kW	5,15
Sound power level	db(A)	59
Refrigerant R407C	kg	4,50
flow rate (heat source) at ext. pressure differential	m³/h / Pa	7.0 / 16000
Heating water flow rate with an int. pressure differential of	m³/h / mbar	2.40 / 12500
Dimensions (W x D x H)**	mm	650 x 575 x 1445
Weight (incl. packing)	kg	255
Control voltage	V	230
Supply voltage		3/PE~400V, 50 Hz
Starting current with soft starter	A	29 SA
Fuse	A	20
Device connections for heating		1 1/4"

\* The specified values have the following meaning, e.g. W10/W35: heat source temperature 10 °C, heat outlet temperature 35 °C.

\*\* Please note that additional space is required for pipe connections, operation and maintenance.

Description	Order ref.	Article number	Sample item	Item	Price
<b>Heat pumps</b>					
Water-to-water heat pump with stainless steel coil heat exchanger	WI 27TE	353160	1		
Elasticated sound insulation underlay strips	SYL 250	352260	1		
<b>Hydraulic accessories</b>					
Floor-mounted buffer tank (200 l)	PSW 200	339830	1		
2 kW immersion heater for back-up heating	CTHK 631	336180			
2.9 kW immersion heater for back-up heating	CTHK 632	335910			
4.5 kW immersion heater for back-up heating	CTHK 633	322140			
6 kW immersion heater for back-up heating	CTHK 634	322150			
Universal buffer tank (500 l)*	PSW 500	339210			
Immersion heater pipe assembly*	HDLR 450	337450			
Dual differential pressureless manifold	DDV 32	348450	1		
Circulating pump for DDV 32	UP 70-32	354020	1		
Manifold bar for connecting two heating circuits	VTB 25	339870			
Unmixed heating circuit module	WWM 25	346600	1		
Circulating pump depending on heating system pressure drop	bauseits				
Mixed heating circuit with temperature sensor*	MMH 25	348640			
Fan convector for heating/cooling with integrated thermostat*	HL 11C	351730			
Fan convector for heating/cooling with integrated thermostat*	HL 16C	351740			
Fan convector for heating/cooling with integrated thermostat*	HL 26C	351760			
Fan convector for heating/cooling with integrated thermostat*	HL 36C	351760			
Fan convector for heating/cooling with external thermostat*	HL 11SK	351770			
Fan convector for heating/cooling with external thermostat*	HL 16SK	351780			
Fan convector for heating/cooling with external thermostat*	HL 26SK	351790			
Fan convector for heating/cooling with external thermostat*	HL 36SK	351800			
<b>DHW preparation accessories</b>					
Hot water cylinder (500 l) with temperature sensor	WWSP 900	339220	1		
6 kW flange heater for hot water cylinder	FLH 60	338060			
2/2.7/4 kW flange heater for hot water cylinder	FLHU 70	338070	1		
Flange heater for hot water cylinder 230 V/2.5 kW	FLH 25M	349430			
Safety valve combination	SVK 852	326660			
Solar station for hot water	SST 25	348430			
Hot water module	WWM 25	346600	1		
Circulating pump for main heat pump circuit	UP 80	340310	1		
Combi cylinder for heating and domestic hot water preparation with central flow*	PWD 750	349100			
<b>Accessories for passive cooling</b>					
Passive cooling controller*	WPM PK	348190			
Three-way distribution valve for passive cooling*	DWU 40	347770			
Hydraulic passive cooling accessories*	ZWU 32	348950			
<b>Control accessories</b>					
Swimming pool / remote fault indicator relay module	RBG WPM	339700			
Heat pump manager remote control*	FWPM 470	337470			
Remote diagnostics hardware package*	RDS	353790			
Remote diagnostics hardware package (serial)*	LDS	353770			
Remote diagnostics hardware package (USB)*	LDS USB	353780			
Thermostat for heating and domestic hot water	KRRV 003	322070			
<b>Control accessories (cooling)</b>					
Room climate control system for temperature and humidity measurement	RKS WPM	342220			
Heating/cooling on/off room temperature controller*	RTK 501	343080			
Heating/cooling on-off room temperature controller in flat switch mounting frame for flush mounting*	RTK 501 U	350960			
Extended dew point monitoring*	TPW WPM	350970			
<b>Start-up (no discount available)</b>					
Heat pump (heating only) start-up	IN 01 WP	341750	1		

\* Other specific accessories available / required

### Important information:

The combination of the components and the quantities indicated represent a non-binding sample system, which needs to be tested and individually adapted as required. Pump dimensioning must be reviewed according to the pressure loss of the system and the minimum heating water flow rate of

the heat pump.



## Water-to-water heat pump with two performance settings

### Order reference: WI 40CS

Installation location: Indoors  
 Flow temperature max 55 °C  
 Casing, powder-coated



High-performance water-to-water heat pump for indoor installation with outside temperature controlled heat pump controller (manager), external control box and two compressor enabling flexible performance adaptation. External sensor, return sensor, two electric connecting leads (1.5 and 10 m) are included in the scope of delivery. Strainer, adjustable motor protective switch and load contactor for well pump, two electronic soft starters for starting currents < 30 A are integrated as standard. A ground water analysis is a mandatory requirement!

The heat pump complies with the valid standards and safety regulations as well as the Technical Specifications for Electrical Installations (TAB) of the electrical utility companies and is VDE certified.

### Technical data WI 40CS

#### Dimplex Water-to-water heat pump with two performance settings (Low temperature)

Order reference	WI 40CS	
Set-up / Colour	Indoors / Marbled green	
Temperature operating limits for heating water / Cold water	55 °C / 7 °C	
Temperature operating limits air	7 °C to 25 °C	
Heat output / COP at W10/W50*	kW/-	1 compressors: 20,60 / 3,80 2 compressors: 43,00 / 4,00
Heat output / COP at W10/W35*	kW/-	1 compressors: 23,40 / 5,90 2 compressors: 44,40 / 5,70
Electrical nominal power consumption at W10/W35	kW	7,81
Sound power level	db(A)	59
Refrigerant R407C	kg	6,70
flow rate (heat source) at ext. pressure differential	m³/h / Pa	9.5 / 17500
Heating water flow rate with an int. pressure differential of	m³/h / mbar	3.50 / 14000
Dimensions (W x D x H)**	mm	1480 x 890 x 830
Weight (incl. packing)	kg	309
Control voltage	V	230
Supply voltage		3/PE~400V, 50 Hz
Starting current with soft starter	A	26 SA
Fuse	A	35
Device connections for heating		1 1/4"

\* The specified values have the following meaning, e.g. W10/W35: heat source temperature 10 °C, heat outlet temperature 35 °C.

\*\* Please note that additional space is required for pipe connections, operation and maintenance.

Description	Order ref.	Article number	Sample item	Item	Price
<b>Heat pumps</b>					
Water-to-water heat pump with two performance settings	WI 40CS	340050	1		
Elasticated sound insulation underlay strips	SYL 250	352260			
<b>Hydraulic accessories</b>					
Universal buffer tank (500 l)*	PSW 500	339210			
Dual differential pressureless manifold*	DDV 32	348450			
Fan convector for heating/cooling with integrated thermostat*	HL 11C	351730			
Fan convector for heating/cooling with integrated thermostat*	HL 16C	351740			
Fan convector for heating/cooling with integrated thermostat*	HL 26C	351760			
Fan convector for heating/cooling with integrated thermostat*	HL 36C	351760			
Fan convector for heating/cooling with external thermostat*	HL 11SK	351770			
Fan convector for heating/cooling with external thermostat*	HL 16SK	351780			
Fan convector for heating/cooling with external thermostat*	HL 26SK	351790			
Fan convector for heating/cooling with external thermostat*	HL 36SK	351800			
<b>DHW preparation accessories</b>					
Hot water cylinder (500 l) with temperature sensor*	WWSP 900	339220			
Circulating pump for main heat pump circuit	UP 80	340310			
<b>Accessories for passive cooling</b>					
Passive cooling controller*	WPM PK	348190			
<b>Control accessories</b>					
External temperature sensor with casing	FG 3115	336620			
Swimming pool / remote fault indicator relay module	RBG WPM	339700			
Heat pump manager remote control*	FWPM 470	337470			
Remote diagnostics hardware package*	RDS	353790			
Remote diagnostics hardware package (serial)*	LDS	353770			
Remote diagnostics hardware package (USB)*	LDS USB	353780			
Thermostat for heating and domestic hot water	KRRV 003	322070			
<b>Control accessories (cooling)</b>					
Room climate control system for temperature and humidity measurement	RKS WPM	342220			
Heating/cooling on/off room temperature controller*	RTK 501	343080			
Heating/cooling on-off room temperature controller in flat switch mounting frame for flush mounting*	RTK 501 U	350960			
<b>Start-up (no discount available)</b>					
Heat pump (heating only) start-up	IN 01 WP	341750			

\* Other specific accessories available / required

### Important information:

The combination of the components and the quantities indicated represent a non-binding sample system, which needs to be tested and individually adapted as required. Pump dimensioning must be reviewed according to the pressure loss of the system and the minimum heating water flow rate of the heat pump.

## Water-to-water heat pump with two performance settings

### Order reference: WI 90CS

Installation location: Indoors  
 Flow temperature max 55 °C  
 Casing, powder-coated



High-performance water-to-water heat pump for indoor installation with outside temperature controlled heat pump controller (manager), external control box and two compressor enabling flexible performance adaptation. External sensor, return sensor, two electric connecting leads (1.5 and 10 m) are included in the scope of delivery. Strainer, adjustable motor protective switch and load contactor for well pump, two electronic soft starters for starting currents < 60 A are integrated as standard. A ground water analysis is a mandatory requirement!

The heat pump complies with the valid standards and safety regulations as well as the Technical Specifications for Electrical Installations (TAB) of the electrical utility companies and is VDE certified.

### Technical data WI 90CS

#### Dimplex Water-to-water heat pump with two performance settings (Low temperature)

Order reference	WI 90CS	
Set-up / Colour	Indoors / Marbled green	
Temperature operating limits for heating water / Cold water	55 °C / 7 °C	
Temperature operating limits air	7 °C to 25 °C	
Heat output / COP at W10/W50*	kW/-	1 compressors: 45,80 / 4,00 2 compressors: 88,10 / 3,80
Heat output / COP at W10/W35*	kW/-	1 compressors: 49,80 / 5,90 2 compressors: 91,20 / 5,40
Electrical nominal power consumption at W10/W35	kW	16,97
Sound power level	db(A)	70
Refrigerant R407C	kg	15,00
flow rate (heat source) at ext. pressure differential	m³/h / Pa	20.0 / 19000
Heating water flow rate with an int. pressure differential of	m³/h / mbar	8.00 / 13000
Dimensions (W x D x H)**	mm	1480 x 890 x 830
Weight (incl. packing)	kg	460
Control voltage	V	230
Supply voltage		3/PE~400V, 50 Hz
Starting current with soft starter	A	60 SA
Fuse	A	63
Device connections for heating		2"

\* The specified values have the following meaning, e.g. W10/W35: heat source temperature 10 °C, heat outlet temperature 35 °C.

\*\* Please note that additional space is required for pipe connections, operation and maintenance.

Description	Order ref.	Article number	Sample item	Item	Price
<b>Heat pumps</b>					
Water-to-water heat pump with two performance settings	WI 90CS	340060	1		
Elasticated sound insulation underlay strips	SYL 250	352260			
<b>Hydraulic accessories</b>					
Universal buffer tank (500 l)*	PSW 500	339210			
Dual differential pressureless manifold*	DDV 32	348450			
Fan convector for heating/cooling with integrated thermostat*	HL 11C	351730			
Fan convector for heating/cooling with integrated thermostat*	HL 16C	351740			
Fan convector for heating/cooling with integrated thermostat*	HL 26C	351760			
Fan convector for heating/cooling with integrated thermostat*	HL 36C	351760			
Fan convector for heating/cooling with external thermostat*	HL 11SK	351770			
Fan convector for heating/cooling with external thermostat*	HL 16SK	351780			
Fan convector for heating/cooling with external thermostat*	HL 26SK	351790			
Fan convector for heating/cooling with external thermostat*	HL 36SK	351800			
<b>Accessories for passive cooling</b>					
Passive cooling controller*	WPM PK	348190			
<b>Control accessories</b>					
External temperature sensor with casing	FG 3115	336620			
Swimming pool / remote fault indicator relay module	RBG WPM	339700			
Heat pump manager remote control*	FWPM 470	337470			
Remote diagnostics hardware package*	RDS	353790			
Remote diagnostics hardware package (serial)*	LDS	353770			
Remote diagnostics hardware package (USB)*	LDS USB	353780			
Thermostat for heating and domestic hot water	KRRV 003	322070			
<b>Control accessories (cooling)</b>					
Room climate control system for temperature and humidity measurement	RKS WPM	342220			
Heating/cooling on/off room temperature controller*	RTK 501	343080			
Heating/cooling on-off room temperature controller in flat switch mounting frame for flush mounting*	RTK 501 U	350960			
<b>Start-up (no discount available)</b>					
Heat pump (heating only) start-up	IN 01 WP	341750			

\* Other specific accessories available / required

### Important information:

The combination of the components and the quantities indicated represent a non-binding sample system, which needs to be tested and individually adapted as required. Pump dimensioning must be reviewed according to the pressure loss of the system and the minimum heating water flow rate of the heat pump.

## Water-to-water heat pump with stainless steel coil heat exchanger

### Order reference: WI 9ME

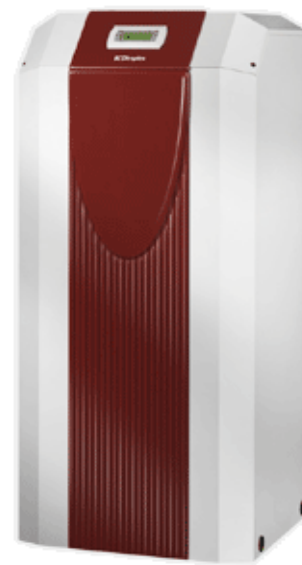
Installation location: Indoors  
 Flow temperature max 58 °C  
 Casing, powder-coated

Heat pump for indoor installation with WPM 2007 plus integrated control and control panel that can also be used as a wired remote control using a wall-mounting kit (special accessory). Variable connection options for ground water and heating system connections on the rear wall of the casing. Sound-optimised through insulated metal casing and double vibration-isolated compressor; integrated corrosion-proof and freeze-proof stainless steel coil heat exchanger; economiser for high COPs. Universal design with optional DHW preparation and the option of flexible expansion for:

- Bivalent or bivalent-renewable operating mode
- Distribution systems with unmixed and mixed heating circuits.

Integrated soft starter and flow rate switch for well-water pump; external sensor (standard NTC-2), dirt filter for ground water included in the scope of supply.

The heat pump complies with the valid standards and safety regulations as well as the Technical Specifications for Electrical Installations (TAB) of the electrical utility companies and is VDE certified.



### Technical data WI 9ME

#### Dimplex Water-to-water heat pump with stainless steel coil heat exchanger (Low temperature)

Order reference	WI 9ME	
Set-up / Colour	Indoors / White (similar to RAL 9003)	
Temperature operating limits for heating water / Cold water	58 °C / 7 °C	
Temperature operating limits air	7 °C to 25 °C	
Heat output / COP at W10/W50*	kW/-	7,70 / 3,20
Heat output / COP at W10/W35*	kW/-	8,30 / 5,10
Electrical nominal power consumption at W10/W35	kW	1,62
Sound power level	db(A)	53
Refrigerant R407C	kg	1,70
flow rate (heat source) at ext. pressure differential	m³/h / Pa	2.0 / 6200
Heating water flow rate with an int. pressure differential of	m³/h / mbar	0.75 / 7000
Dimensions (W x D x H)**	mm	650 x 575 x 1445
Weight (incl. packing)	kg	156
Control voltage	V	230
Supply voltage		1/N/PE~230V, 50Hz
Starting current with soft starter	A	30
Fuse	A	16
Device connections for heating		1 1/4"

\* The specified values have the following meaning, e.g. W10/W35: heat source temperature 10 °C, heat outlet temperature 35 °C.

\*\* Please note that additional space is required for pipe connections, operation and maintenance.

Description	Order ref.	Article number	Sample item	Item	Price
<b>Heat pumps</b>					
Water-to-water heat pump with stainless steel coil heat exchanger	WI 9ME	353340	1		
Elasticated sound insulation underlay strips	SYL 250	352260	1		
<b>Hydraulic accessories</b>					
Floor-mounted buffer tank (200 l)*	PSW 200	339830			
Universal buffer tank (500 l)*	PSW 500	339210			
Immersion heater pipe assembly*	HDLR 450	337450			
3 kW radiator	HCT 300	351210			
Compact manifold with overflow valve	KPV 25	346590	1		
Differential pressureless manifold extension module	EB KPV	348650			
Circulating pump for main heat pump circuit	UP 60	340300			
Circulating pump for main heat pump circuit	UP 80	340310			
Dual differential pressureless manifold*	DDV 32	348450			
Manifold bar for connecting two heating circuits	VTB 25	339870			
Unmixed heating circuit module*	WWM 25	346600			
Mixed heating circuit with temperature sensor*	MMH 25	348640			
Mixer module for bivalent systems	MMB 25	348880			
Fan convector for heating/cooling with integrated thermostat*	HL 11C	351730			
Fan convector for heating/cooling with integrated thermostat*	HL 16C	351740			
Fan convector for heating/cooling with integrated thermostat*	HL 26C	351760			
Fan convector for heating/cooling with integrated thermostat*	HL 36C	351760			
Fan convector for heating/cooling with external thermostat*	HL 11SK	351770			
Fan convector for heating/cooling with external thermostat*	HL 16SK	351780			
Fan convector for heating/cooling with external thermostat*	HL 26SK	351790			
Fan convector for heating/cooling with external thermostat*	HL 36SK	351800			
<b>DHW preparation accessories</b>					
Hot water cylinder (400 l) with temperature sensor*	WWSP 880	337880			
Hot water cylinder (500 l) with temperature sensor*	WWSP 900	339220			
Combination cylinder for heating and DHW preparation	PWS 332	348620	1		
2 kW immersion heater for back-up heating	CTHK 631	336180			
Flange heater for hot water cylinder 230 V/2.5 kW	FLH 25M	349430			
Safety valve combination	SVK 852	326660			
Manifold bar for KPV 25 and HHM 25 connection	VTB 25	339870	1		
Hot water module	WWM 25	346600	1		
Circulating pump for main heat pump circuit	UP 60	340300	1		
Circulating pump for main heat pump circuit	UP 80	340310			
<b>Accessories for passive cooling</b>					
Passive cooling controller*	WPM PK	348190			
Three-way distribution valve for passive cooling*	DWU 25	347760			
Hydraulic passive cooling accessories*	ZWU 25	348940			
<b>Control accessories</b>					
External temperature sensor with casing	FG 3115	336620			
Swimming pool / remote fault indicator relay module	RBG WPM	339700			
Heat pump manager remote control*	FWPM 470	337470			
Remote diagnostics hardware package*	RDS	353790			
Remote diagnostics hardware package (serial)*	LDS	353770			
Remote diagnostics hardware package (USB)*	LDS USB	353780			
Thermostat for heating and domestic hot water	KRRV 003	322070			
<b>Control accessories (cooling)</b>					
Room climate control system for temperature and humidity measurement	RKS WPM	342220			
Heating/cooling on/off room temperature controller*	RTK 501	343080			
Heating/cooling on/off room temperature controller in flat switch mounting frame for flush mounting*	RTK 501 U	350960			
Extended dew point monitoring*	TPW WPM	350970			
<b>Start-up (no discount available)</b>					
Heat pump (heating only) start-up	IN 01 WP	341750	1		

\* Other specific accessories available / required

#### Important information:

The combination of the components and the quantities indicated represent a non-binding sample system, which needs to be tested and individually

adapted as required. Pump dimensioning must be reviewed according to the pressure loss of the system and the minimum heating water flow rate of the heat pump.



## Water-to-water heat pump with stainless steel coil heat exchanger

### Order reference: WI 9TE

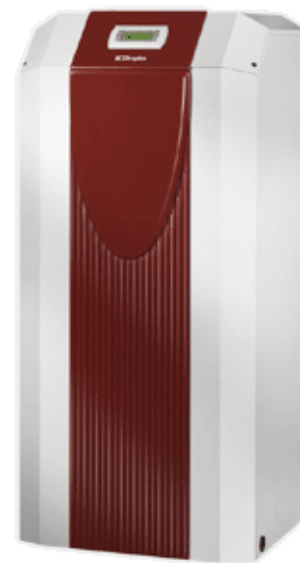
Installation location: Indoors  
 Flow temperature max 58 °C  
 Casing, powder-coated

Heat pump for heating purposes for indoor installation with WPM 2007 plus integrated control and control panel that can also be used as a wired remote control using a wall-mounting kit (special accessory). Variable connection options for ground water and heating system connections on the rear wall of the casing. Sound-optimised through insulated metal casing and double vibration-isolated compressor; integrated corrosion-proof and freeze-proof stainless steel coil heat exchanger; economiser for high COPs. Universal design with optional DHW preparation and the possibility of flexible expansion for:

- Bivalent or bivalent-renewable operating mode
- Distribution systems with unmixed and mixed heating circuits.

Integrated flow rate switch and load contactor for well water pump; external sensor (standard NTC-2), dirt filter for ground water included in the scope of supply.

The heat pump complies with the valid standards and safety regulations as well as the Technical Specifications for Electrical Installations (TAB) of the electrical utility companies and is VDE certified.



### Technical data WI 9TE

#### Dimplex Water-to-water heat pump with stainless steel coil heat exchanger (Low temperature)

Order reference	WI 9TE	
Set-up / Colour	Indoors / White (similar to RAL 9003)	
Temperature operating limits for heating water / Cold water	58 °C / 7 °C	
Temperature operating limits air	7 °C to 25 °C	
Heat output / COP at W10/W50*	kW/-	7,70 / 3,20
Heat output / COP at W10/W35*	kW/-	8,30 / 5,10
Electrical nominal power consumption at W10/W35	kW	1,62
Sound power level	db(A)	53
Refrigerant R407C	kg	1,70
flow rate (heat source) at ext. pressure differential	m³/h / Pa	2.0 / 6200
Heating water flow rate with an int. pressure differential of	m³/h / mbar	0.75 / 7000
Dimensions (W x D x H)**	mm	650 x 575 x 1445
Weight (incl. packing)	kg	156
Control voltage	V	230
Supply voltage		3/PE~400V, 50 Hz
Starting current with soft starter	A	30
Fuse	A	16
Device connections for heating		1 1/4"

\* The specified values have the following meaning, e.g. W10/W35: heat source temperature 10 °C, heat outlet temperature 35 °C.

\*\* Please note that additional space is required for pipe connections, operation and maintenance.

Description	Order ref.	Article number	Sample item	Item	Price
<b>Heat pumps</b>					
Water-to-water heat pump with stainless steel coil heat exchanger	WI 9TE	353120	1		
Elasticated sound insulation underlay strips	SYL 250	352260	1		
<b>Hydraulic accessories</b>					
Floor-mounted buffer tank (200 l)*	PSW 200	339830			
Universal buffer tank (500 l)*	PSW 500	339210			
Immersion heater pipe assembly*	HDLR 450	337450			
3 kW radiator	HCT 300	351210			
Compact manifold with overflow valve	KPV 25	346590	1		
Differential pressureless manifold extension module	EB KPV	348650			
Circulating pump for main heat pump circuit	UP 60	340300	1		
Circulating pump for main heat pump circuit	UP 80	340310			
Dual differential pressureless manifold*	DDV 32	348450			
Manifold bar for connecting two heating circuits	VTB 25	339870			
Unmixed heating circuit module*	WWM 25	346600			
Mixed heating circuit with temperature sensor*	MMH 25	348640			
Mixer module for bivalent systems	MMB 25	348880			
Fan convector for heating/cooling with integrated thermostat*	HL 11C	351730			
Fan convector for heating/cooling with integrated thermostat*	HL 16C	351740			
Fan convector for heating/cooling with integrated thermostat*	HL 26C	351760			
Fan convector for heating/cooling with integrated thermostat*	HL 36C	351760			
Fan convector for heating/cooling with external thermostat*	HL 11SK	351770			
Fan convector for heating/cooling with external thermostat*	HL 16SK	351780			
Fan convector for heating/cooling with external thermostat*	HL 26SK	351790			
Fan convector for heating/cooling with external thermostat*	HL 36SK	351800			
<b>DHW preparation accessories</b>					
Hot water cylinder (400 l) with temperature sensor*	WWSP 880	337880			
Hot water cylinder (500 l) with temperature sensor*	WWSP 900	339220			
Combination cylinder for heating and DHW preparation	PWS 332	348620	1		
2 kW immersion heater for back-up heating	CTHK 631	336180			
2.9 kW immersion heater for back-up heating	CTHK 632	335910			
4.5 kW immersion heater for back-up heating	CTHK 633	322140			
6 kW immersion heater for back-up heating	CTHK 634	322150			
7.5 kW immersion heater for back-up heating	CTHK 635	322160			
6 kW flange heater for hot water cylinder	FLH 60	338060			
2/2.7/4 kW flange heater for hot water cylinder	FLHU 70	338070	1		
Flange heater for hot water cylinder 230 V/2.5 kW	FLH 25M	349430			
Safety valve combination	SVK 852	326660			
Manifold bar for KPV 25 and HHM 25 connection	VTB 25	339870	1		
Hot water module	WWM 25	346600	1		
Circulating pump for main heat pump circuit	UP 60	340300	1		
Circulating pump for main heat pump circuit	UP 80	340310			
<b>Accessories for passive cooling</b>					
Passive cooling controller*	WPM PK	348190			
Three-way distribution valve for passive cooling*	DWU 25	347760			
Hydraulic passive cooling accessories*	ZWU 25	348940			
<b>Control accessories</b>					
External temperature sensor with casing	FG 3115	336620			
Swimming pool / remote fault indicator relay module	RBG WPM	339700			
Heat pump manager remote control*	FWPM 470	337470			
Remote diagnostics hardware package*	RDS	353790			
Remote diagnostics hardware package (serial)*	LDS	353770			
Remote diagnostics hardware package (USB)*	LDS USB	353780			
Thermostat for heating and domestic hot water	KRRV 003	322070			
<b>Control accessories (cooling)</b>					
Room climate control system for temperature and humidity measurement	RKS WPM	342220			
Heating/cooling on/off room temperature controller*	RTK 501	343080			
Heating/cooling on/off room temperature controller in flat switch mounting frame for flush mounting*	RTK 501 U	350960			

Description	Order ref.	Article number	Sample item	Item	Price
Extended dew point monitoring*	TPW WPM	350970			
<b>Start-up (no discount available)</b>					
Heat pump (heating only) start-up	IN 01 WP	341750	1		

\* Other specific accessories available / required

**Important information:**

The combination of the components and the quantities indicated represent a non-binding sample system, which needs to be tested and individually adapted as required. Pump dimensioning must be reviewed according to the pressure loss of the system and the minimum heating water flow rate of the heat pump.